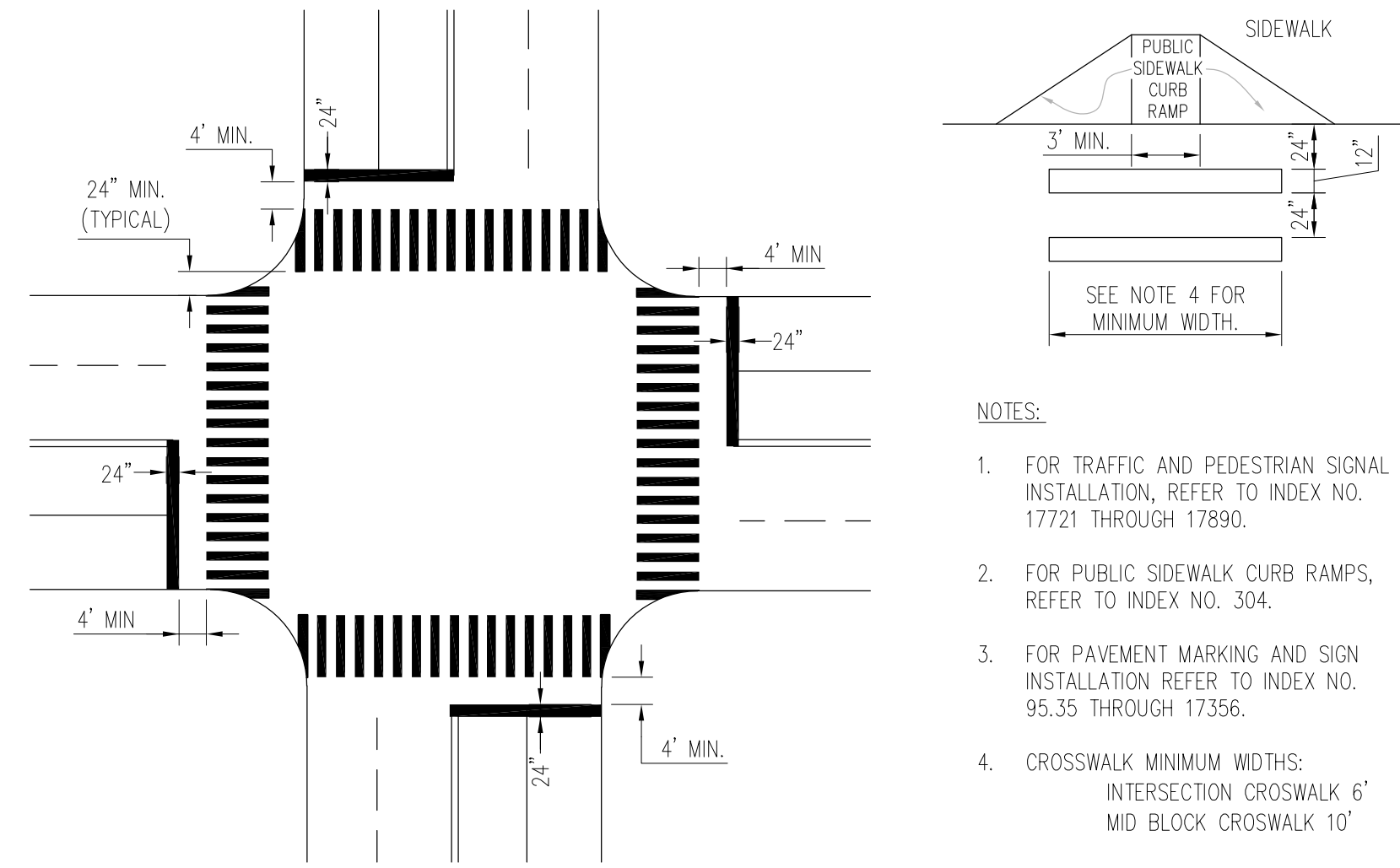


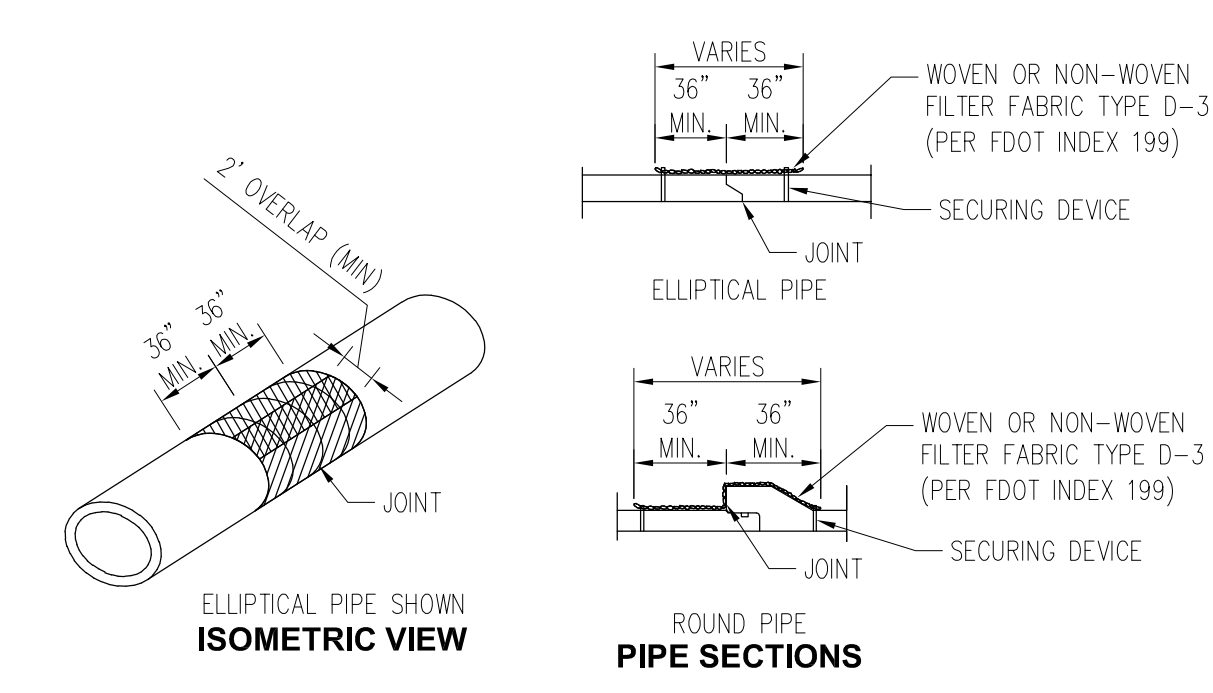
GENERAL NOTES:

1. ALL NEW STORM AND SANITARY SEWER LINES IN THE CITY OF WINTER GARDEN SHALL BE SUBJECTED TO CLOSED CIRCUIT TV INSPECTION PRIOR TO BEING ACCEPTED BY THE CITY, WHETHER PRIVATE OR CITY MAINTAINED. ALL STORM SEWER PIPE SHALL BE REINSPECTED AT THE YEAR END, COST TO BE PAID BY THE OWNER.
2. PIPE MATERIAL SHALL BE AS SHOWN ON THE CONSTRUCTION PLANS UNLESS OTHERWISE APPROVED BY THE CITY ENGINEER.
3. CONTRACTOR AND OWNER ARE RESPONSIBLE FOR ENSURING THAT ALL CITY, COUNTY, STATE (FDEP, FDOT, SJRWMD, ETC.), AND FEDERAL PERMITS HAVE BEEN ISSUED FOR THE PROJECT.
4. ALL STORM SYSTEM MUST BE WATER-TIGHT WITH ALL JOINTS WRAPPED.
5. STORM SYSTEM WILL BE CLEANED PRIOR TO BEING TV'D.
6. THE OWNER SHALL KEEP A COPY OF THE WATER MANAGEMENT DISTRICT PERMIT, NPDES, NOI AND SWPP PLAN IN A CONSPICUOUS LOCATION ON THE JOB SITE AT ALL TIMES.
7. ALL STORM SEWER MANHOLES FRAME & COVER SHALL BE ASTM 225.
8. CLEAN SAND SHALL CONSIST OF MATERIAL HAVING LESS THAN 5% PASSING THE #200 SIEVE.
9. ONLY CONCRETE RISER RINGS WILL BE ALLOWED TO BE PLACED FOR STORM MANHOLES. ALL RISER RINGS SHALL BE SEALED TO THE STRUCTURE USING WRAPID SEAL. NO MORE THAN 15" WILL BE ALLOWED.
10. STORM SEWER PIPES SHALL MEET ASTM C76 & ASTM C507.
11. ALL STORM SEWER STRUCTURE SECTIONS SHALL BE SEALED WITH WRAPID SEAL.



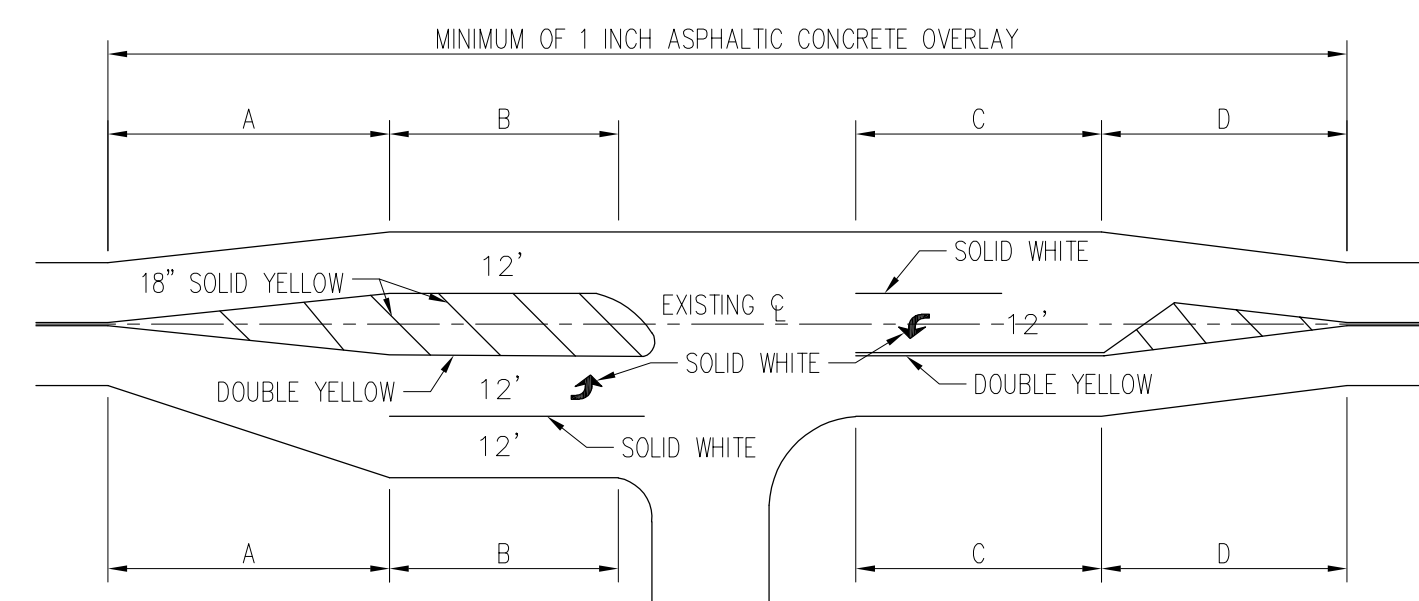
1 TYPICAL CROSSWALK
N.T.S.

- NOTES:**
1. FOR TRAFFIC AND PEDESTRIAN SIGNAL INSTALLATION, REFER TO INDEX NO. 17721 THROUGH 17890.
 2. FOR PUBLIC SIDEWALK CURB RAMP, REFER TO INDEX NO. 304.
 3. FOR PAVEMENT MARKING AND SIGN INSTALLATION REFER TO INDEX NO. 95.35 THROUGH 17356.
 4. CROSSWALK MINIMUM WIDTHS:
INTERSECTION CROSSWALK 6'
MID BLOCK CROSSWALK 10'



2 FILTER FABRIC JACKET
N.T.S.

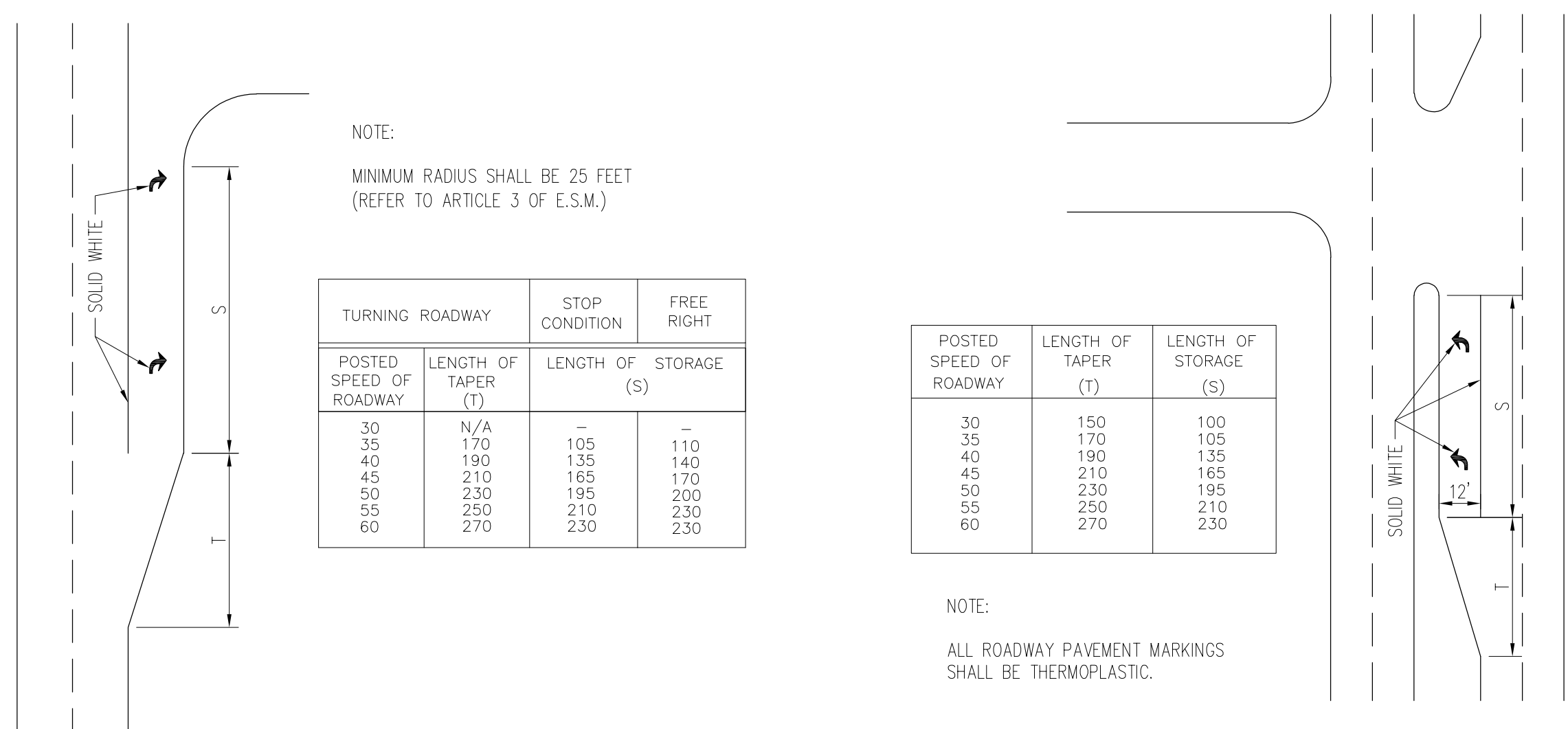
Cost of filter fabric jacket to be included in cost of pipe culverts.
FOR ALL PIPE TYPES - CONCRETE PIPE SHOWN



- NOTES:**
- 1) STRIPING ACCORDING TO F.D.O.T. STANDARD INDEX #17346B.
 - 2) LANE WIDTHS TO MATCH EXISTING LANE WIDTHS.
 - 3) MINIMUM RADIUS SHALL BE 25 FEET (REFER TO ARTICLE 3 OF E.S.M.)
 - 4) ALL ROADWAY PAVEMENT MARKING SHALL BE THERMAPLASTIC.

SPEED	PAVEMENT MARKING LENGTHS			
	A	B	C	D
40 MPH	190'	110'	135'	190'
45 MPH	210'	140'	165'	210'
50 MPH	230'	170'	195'	230'
55 MPH	250'	200'	210'	250'

3 TYPICAL INTERSECTION
N.T.S.



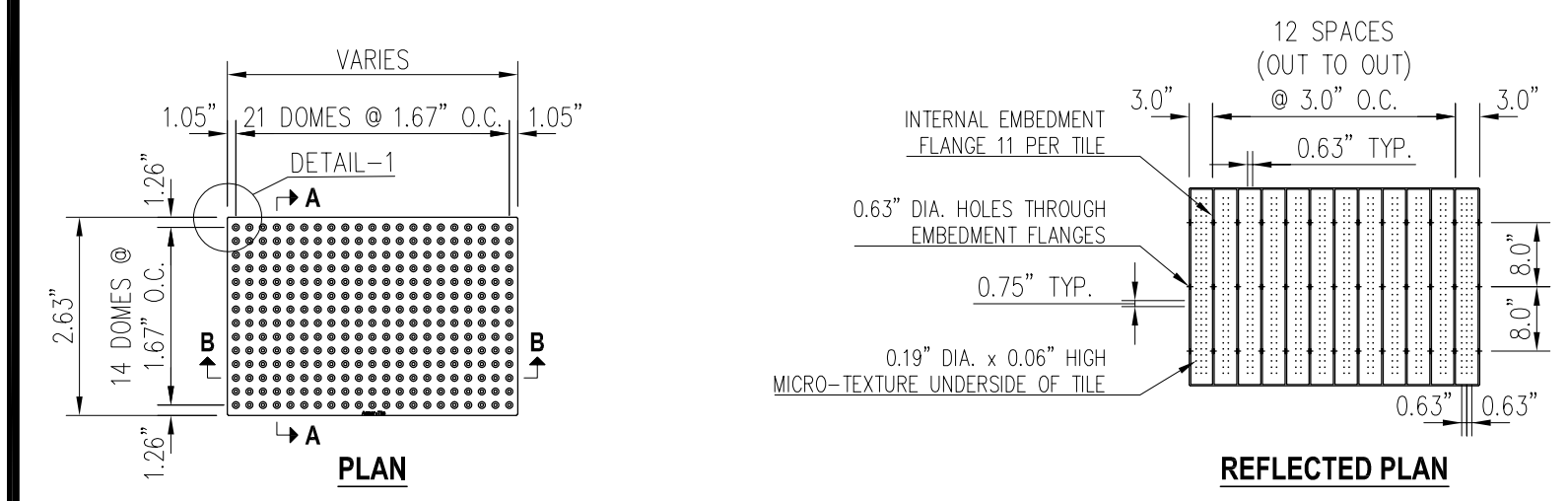
4 RIGHT TURN DECELERATION LANE
N.T.S.

POSTED SPEED OF ROADWAY	LENGTH OF TAPER (T)	STOP CONDITION	
		LENGTH OF STORAGE (S)	FREE RIGHT
30	N/A	-	-
35	170	105	110
40	190	135	140
45	210	165	170
50	230	195	200
55	250	210	230
60	270	230	230

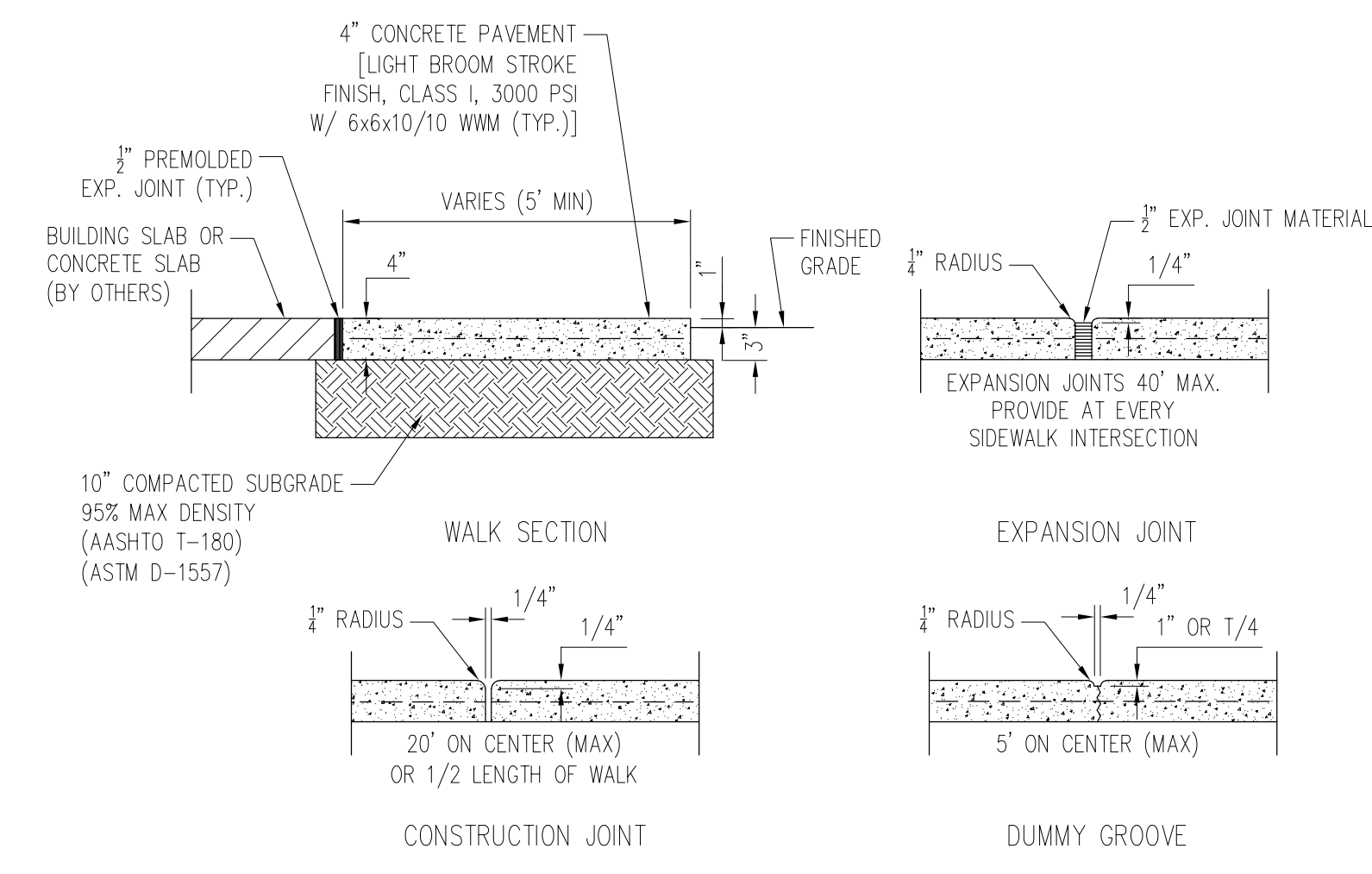
POSTED SPEED OF ROADWAY	LENGTH OF TAPER (T)	LENGTH OF STORAGE (S)	
		150	100
35	170	105	105
40	190	135	135
45	210	165	165
50	230	195	195
55	250	210	210
60	270	230	230

NOTE:
ALL ROADWAY PAVEMENT MARKINGS SHALL BE THERMOPLASTIC.

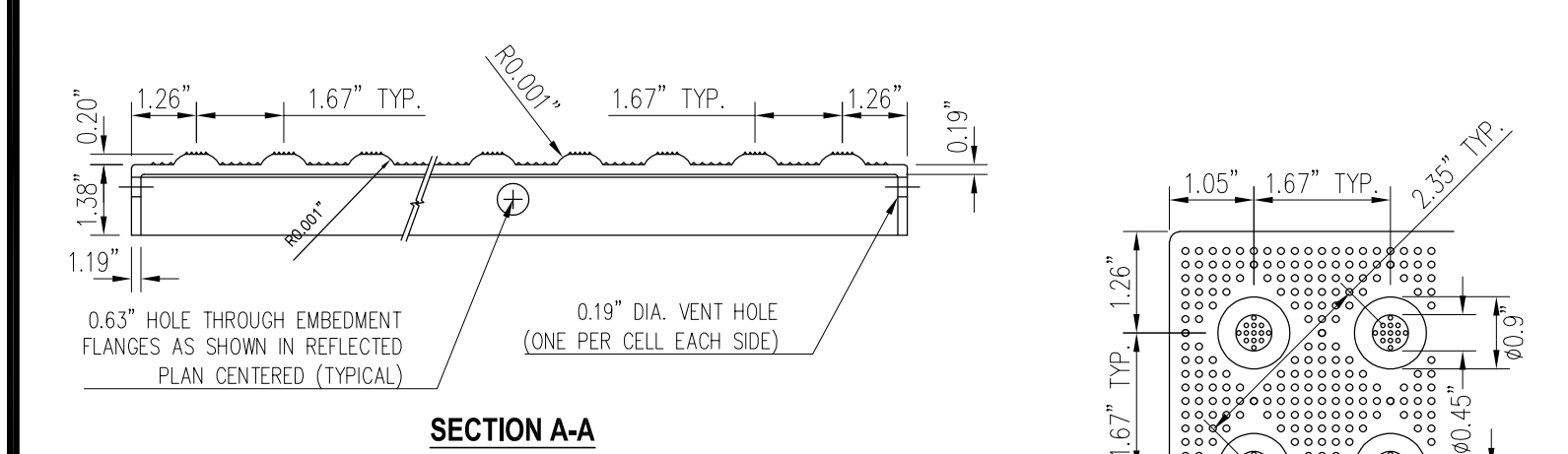
5 DIVIDED HIGHWAY LEFT TURN STORAGE LANE
N.T.S.



6 CURB RAMPS & DETECTABLE WARNING PLACEMENT
N.T.S.



7 SIDEWALK DETAILS
N.T.S.



- NOTE:**
1. CURB RAMP DETECTABLE WARNING TILE SHALL BE ARMOR TILE OR EQUAL.
 2. ALL SIDEWALK CURB RAMPS SHALL HAVE DETECTABLE WARNING SURFACES THAT EXTEND THE FULL WIDTH OF THE RAMP AND IN THE DIRECTION OF TRAVEL 24 INCHES (610 MM) FROM THE BACK OF CURB.

8 DETECTABLE WARNING DETAIL
N.T.S.

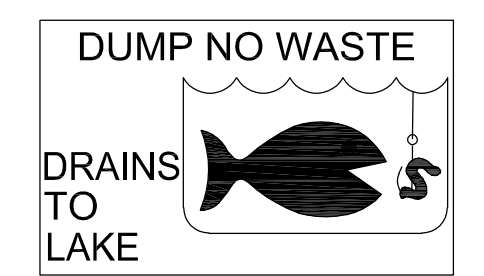


PLATE SHALL BE ADDED TO STORMWATER INLETS AS REQUIRED BY THE CITY.

WINTER GARDEN STANDARDS INCORPORATED WITH DESIGN ENGINEERS' DOCUMENTS.

THE DETAILS, NOTES AND SPECIFICATIONS SHOWN ON THIS SHEET REPRESENT THE NOTED STANDARDS OF THE CITY OF WINTER GARDEN FOR CONSTRUCTION OF PUBLIC WORKS AND UTILITY INFRASTRUCTURE. BY INCLUDING THE STANDARDS, THE DESIGN ENGINEER HAS ACKNOWLEDGED THAT THEY ARE EFFECTIVE TO THE PROJECT AND THAT DETAILS, NOTES, OR SPECIFICATIONS ARE AS PROVIDED BY THE CITY AND HAVE NOT BEEN REVISED OR MODIFIED WITHOUT WRITTEN APPROVAL FROM THE CITY ENGINEER OR UTILITY DIRECTOR.

DATE	ITEM	NO.

CITY OF WINTER GARDEN, FLORIDA
STANDARDS AND SPECIFICATIONS
FOR ROADWAY & DRAINAGE CONSTRUCTION
WINTER GARDEN

STANDARD DETAILS
FOR
PUBLIC SERVICES